

## 20w LED Floodlight 400716HJ 3 Year Warranty



Lumineux  
Manby Business Park  
Louth, Lincolnshire  
LN11 8UT

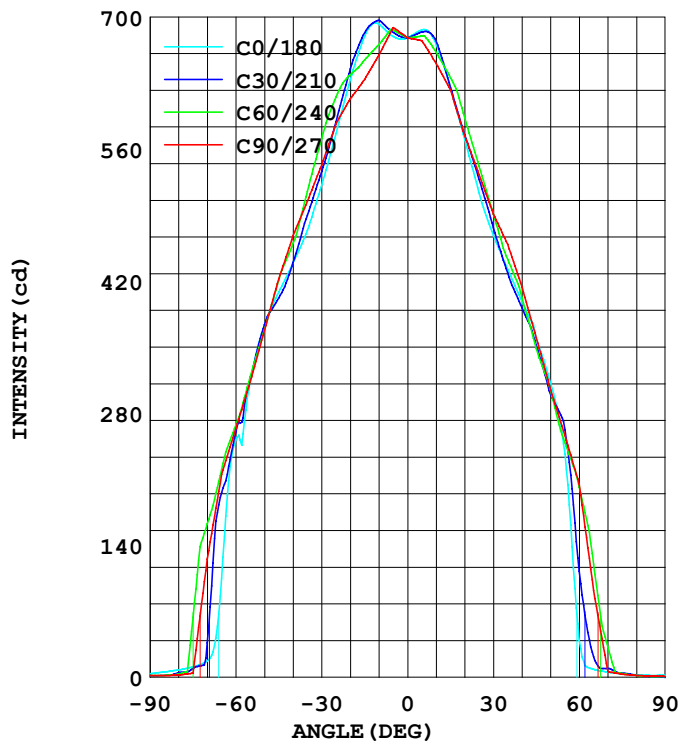
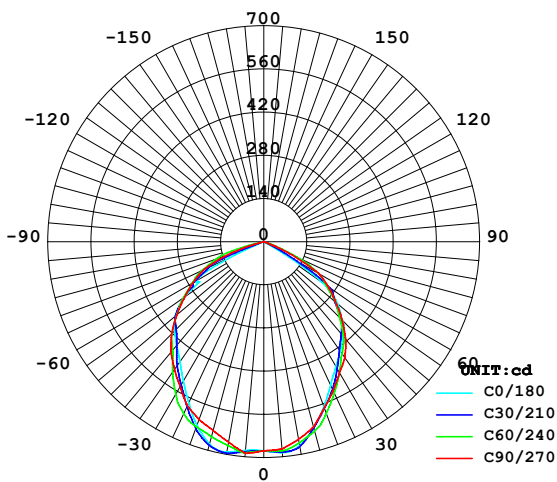
tel: 01507 328031 fax: 01507 328039  
email: [sales@lumineux.co.uk](mailto:sales@lumineux.co.uk)

# Luminaire Photometric Test Report

## 20w LED Floodlight

Model:	20w	I <sub>max</sub> (cd)	697.7	S/H (C0/180)	1.16
Nominal Power (w)	22	Efficiency (%)	106.7	S/H (C90/270)	1.20
Rated Voltage (v)	230	Total Flux (lm)	1594.1	Up (%)	0.0
Nominal Flux (lm)	1600	Class	Direct	Down (%)	106.7
Test Flux (lm)	1600				

### Luminous Intensity Distribution



tel: 01507 328031  
 fax: 01507 328039  
 email: sales@lumineux.co.uk

## Technical Specification

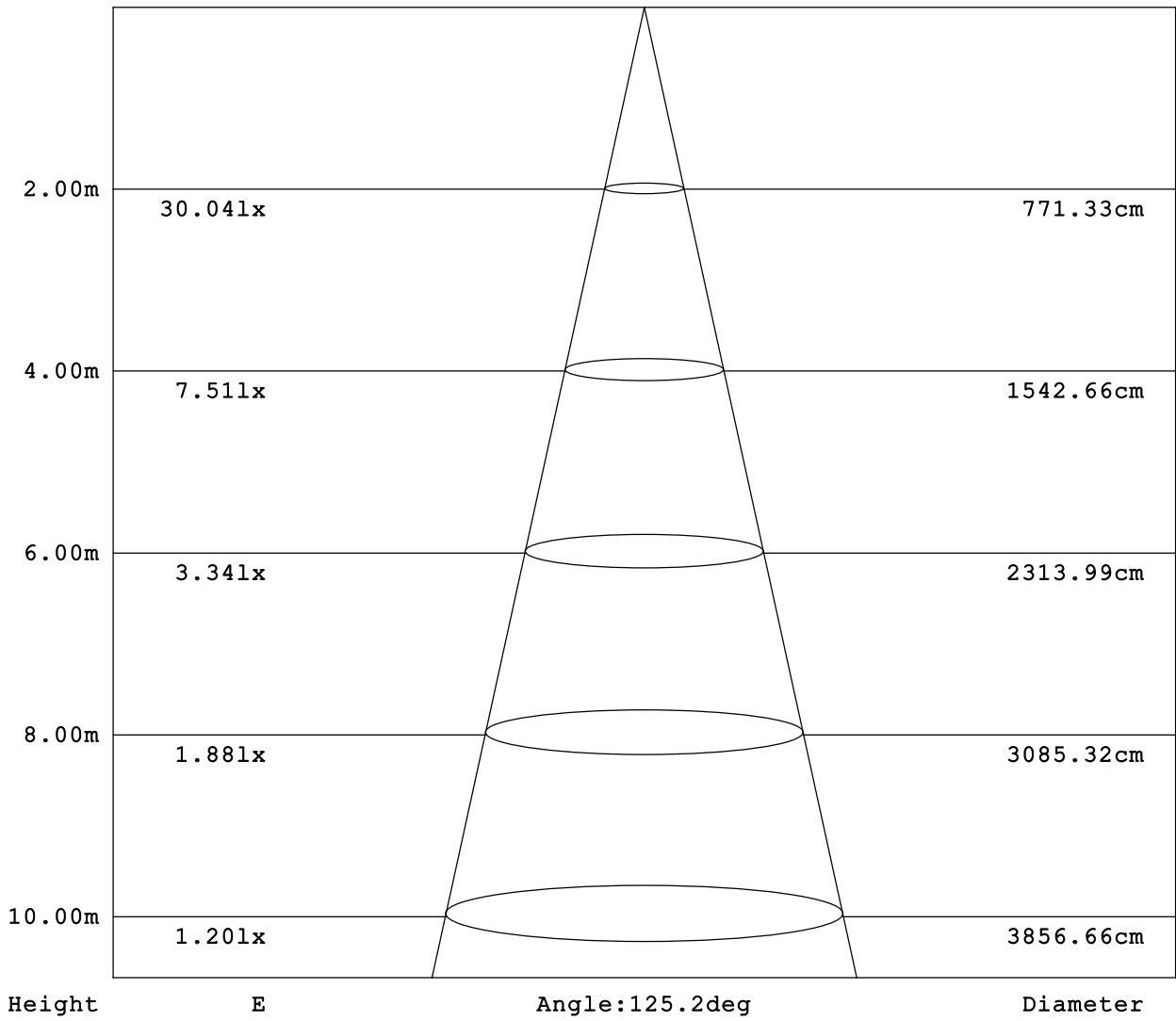
Parameter	Specification
Input Voltage	90-264 ACV 50Hz
Inout Power	20w ± 10%
CRI	>65
Lumen Output	1600 Lumens Nominal
Colour Temp	4200k Cool White
Working Temp	-25 to +45 degree C
Storage Temp	-45 to +70 degree C
Relative Humidity	Min 10% Max 90%
Max working Altitude	2000m
Input Power Factor	.92
Input Effective Current	Min 0.1A Max 0.15A
Input Power	Min 19w Max 22w
Harmonic Distortion	20%
LED Light Source constant current	Min 320mA Max 360mA
LED Light Source constant voltage	Min 27v Max 34v
MTBF	≥25000H
Heat Sink	Product use at room temp. Max less than 70°C
Weight	0.55KG
Initial Luminous Flux	1600-1800lm
Initial Colour Rendering	65
Initial Related colour temp	See Diagram
Optic maintenance ratio	70%
Stroboscopic	No
Temp Power Drift	10%
Temp Flux Drift	10%
Lighting on Lamp time	100ms
Lighting off lamp time	100ms
Beam Angle	120 Degrees
Light Distribution curve	See diagram
Projection Area	See diagram
Flare shape	See diagram
H.V Test	3000VAC<5mA 60s L,N--GND
Insulation Resistance	1000VDC>10M Primary-subprime
Leakage Current	Input 264VAC/50Hz <3.5mA L,N--GND
EMC Certificate Numbers	CE EN55015
Protection grade	IP65
Input Connection	Via 1M 3 Core Mains Cable

tel: 01507 328031

fax: 01507 328039

email: sales@lumineux.co.uk

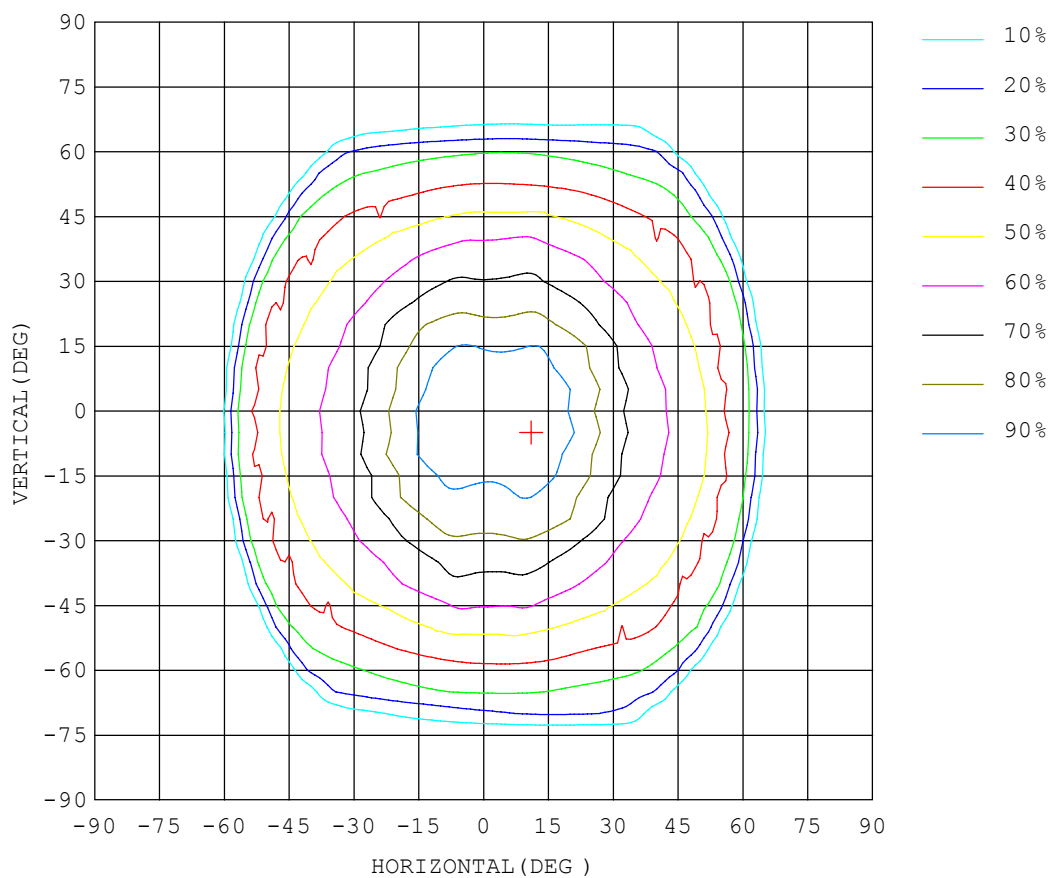
# Average E Figure



tel: 01507 328031  
 fax: 01507 328039  
 email: [sales@lumineux.co.uk](mailto:sales@lumineux.co.uk)

# Isocandela Diagram

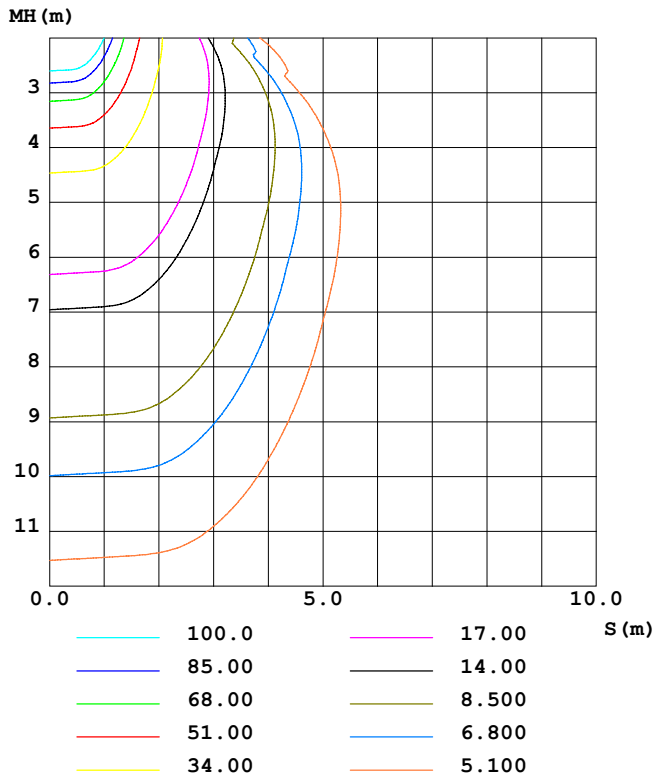
UNIT: cd



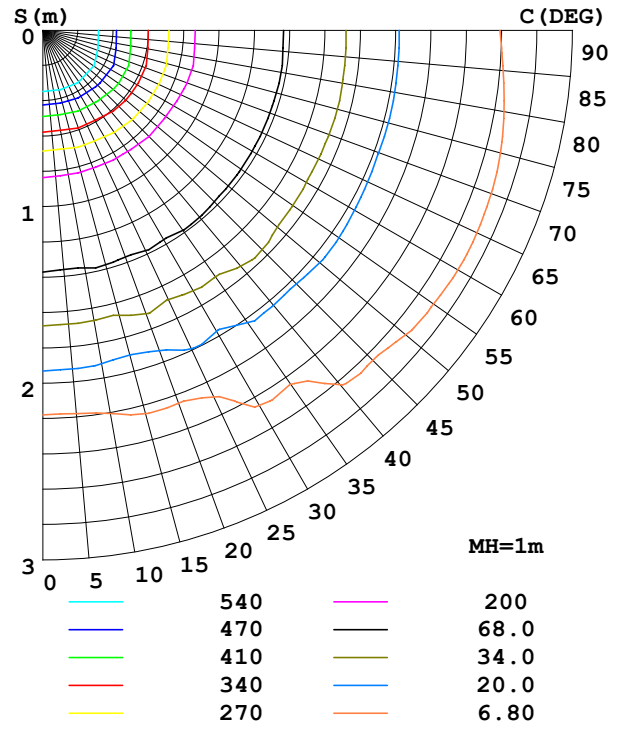
tel: 01507 328031  
fax: 01507 328039  
email: [sales@lumineux.co.uk](mailto:sales@lumineux.co.uk)

# Isolux Diagram

C0 PLANE ISOLUX DIAGRAM (UNIT:lx)



PLANAR ISOLUX DIAGRAM (UNIT:lx)



tel: 01507 328031  
 fax: 01507 328039  
 email: sales@lumineux.co.uk